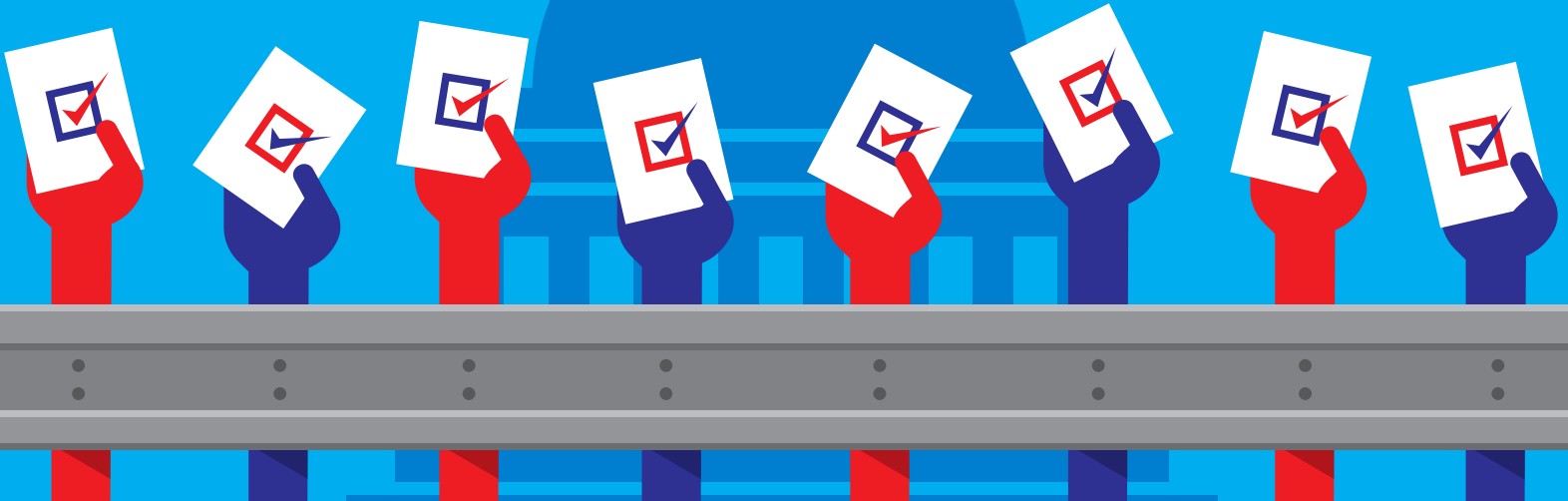


10TH ANNUAL SPRING SYMPOSIUM
SMC PUBLIC POLICY INSTITUTE AND SMC ASSOCIATED STUDENTS

GUARDRAILS TO PROTECT OUR DEMOCRACY



MAY 17-20, 2021



GUARDRAILS TO PROTECT OUR DEMOCRACY

10TH ANNUAL SPRING SYMPOSIUM – SMC PUBLIC POLICY INSTITUTE AND SMC ASSOCIATED STUDENTS

IMPEACHMENT! HOW THE LEGISLATURE CHECKS THE EXECUTIVE BRANCH

Monday, May 17, 7-8:30 p.m. via Zoom

<https://cccconfer.zoom.us/j/98642035231>

A conversation with Impeachment Manager, U.S. Representative Ted Lieu (D-CA). **Congressman Ted Lieu** initiated the Article of Impeachment following the attack on the U.S. Capitol on January 6, 2021 as Congress was formalizing the results of the Electoral College votes and finalizing the outcome of the 2020 Presidential Election. **State Senator Ben Allen** will moderate a conversation and Q&A about this incredible moment for democracy and our nation's history.

VOTING RIGHTS! HOW PROTECTING ACCESS TO VOTING PROTECTS DEMOCRACY

Tuesday, May 18, 7-8:30 p.m. via Zoom

<https://cccconfer.zoom.us/j/99515538327>

PPI Co-Director, Professor Richard Tahvildaran-Jesswein leads a discussion with **Julia Gomez**, ACLU SoCal Voting Rights Staff Attorney, and **Cynthia Valencia**, ACLU SoCal Policy Advocate and Organizer for Voting Rights and Activist Engagement, about the current state of voting rights in our country. An excellent film to watch prior to the event is the documentary "ALL IN: The Fight For Democracy" on Amazon Prime, featuring and created by Nobel Peace Prize Nominee Stacey Abrams.

"WHERE THE MONEY RESIDE ?!" HOW THE PEOPLE CHECK LOCAL GOVERNMENT SPENDING

Wednesday, May 19, 7-8:30 p.m. via Zoom

<https://cccconfer.zoom.us/j/95264506940>

Santa Monica Mayor Sue Himmelrich and **Participatory Budgeting Project Executive Director Shari Davis** of Oakland discuss the power of municipal budgets to reflect community priorities.

"HOW IS DEMOCRACY PERSONAL FOR YOU?"

Thursday, May 20, 7-8:30 p.m. via Zoom

<https://cccconfer.zoom.us/j/98607124078>

SMC students share videos and discuss their perspectives on the threats and challenges to American Democracy. Overview and moderating by **Dr. Amber Katherine**, Professor of Philosophy

If you need an accommodation due to a disability to participate in any of these events, please contact Kiersten Elliott at Elliott_Kiersten@smc.edu or 310-434-4173, at least 5 business days in advance.

SANTA MONICA COMMUNITY COLLEGE DISTRICT BOARD OF TRUSTEES

Rob Rader, *Chair*; Dr. Louise Jaffe, *Vice Chair*; Dr. Susan Aminoff; Dr. Nancy Greenstein; Dr. Margaret Quiñones-Perez; Dr. Sion Roy; Barry A. Snell; Joshua Elizondo, *Student Trustee*; Kathryn E. Jeffery, Ph.D., *Superintendent/President*
Santa Monica College | 1900 Pico Blvd. Santa Monica, CA 90405 | smc.edu

Santa Monica College
1900 Pico Boulevard, Santa Monica, CA 90405
smc.edu/ppi · ppi@smc.edu · (310) 434-3541



Associates