



A BASIC NEEDS ECOSYSTEM FOR STUDENTS



MEET THE BASIC NEEDS TEAM



SMC'S BASIC NEEDS STAFF



Sharlyne Massillon
Basic Needs
Project Manager, MSW



Sally Calderon
Basic Needs
Counselor, MSW



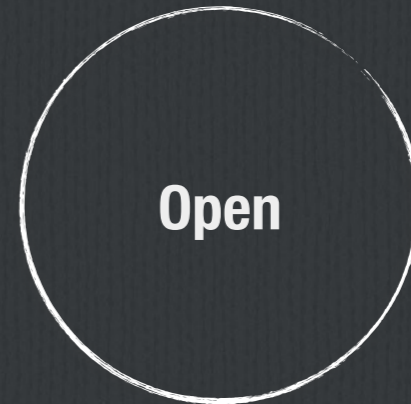
Alyssa Heskin
Basic Needs
Counselor, MSW



Thaddeus Phillips
Basic Needs
Counselor, MSW



Andrew Smith
Basic Needs
Counselor MSW



**-vacant-
Basic Needs
"Coordinator"**



WHO SHOULD I ASK FOR HELP?

.....

ALL SMC EMPLOYEES ARE HERE FOR YOU!

GROUND PERSONNEL
FACILITIES PERSONNEL
COACHES
PROFESSORS
COUNSELORS
FRONT DESK CLERKS
STUDENT WORKERS
ADMINISTRATORS
LIBRARIANS
& MORE!

WHAT IS BASIC NEEDS?

Students' **basic needs** include access to nutritious and sufficient food; safe, secure, and adequate housing – to sleep, to study, to cook, and to shower; healthcare to promote sustained mental and physical wellbeing; affordable technology and transportation resources for personal hygiene, and child care and related needs.

Basic needs security means that there is an ecosystem in place to ensure that students' basic needs are met.

Basic needs insecurity (BNI) is a structural characteristic affecting students, not an individual characteristic. It means that there is not an ecosystem in place to ensure that students' basic needs are met.

BY DEFINITION

Food Insecurity is defined by “the limited or uncertain availability of nutritionally adequate and safe foods or the ability to acquire such foods in a socially acceptable manner. The most extreme form is often accompanied by physiological sensations of hunger.”

Housing insecurity encompasses a broad set of challenges that prevent someone from having a safe, affordable, and consistent place to live.

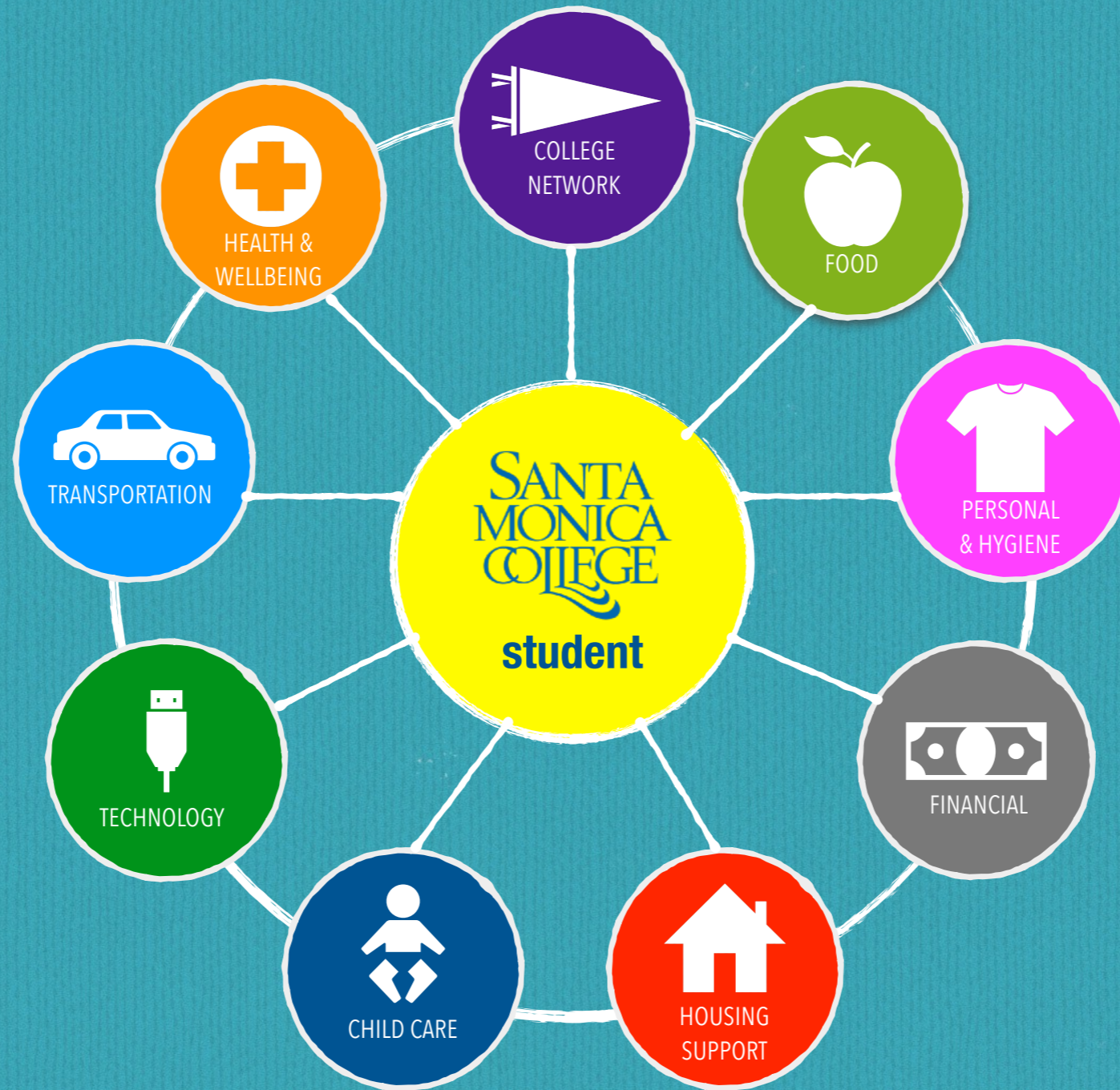
Homelessness means that a person does not have a fixed, regular, and adequate place to live. In alignment with the McKinney-Vento Homeless Assistance Act, students are considered homeless if they identified as experiencing homelessness or signs of homelessness (i.e., living in a shelter, a car, temporarily with a relative, or in a space not meant for human habitation).

-The Hope Center for College, Community, and Justice

**WHAT RESOURCES ARE AVAILABLE
FOR STUDENTS WHO NEED
HELP WITH BASIC NEEDS?**



BASIC NEEDS ECOSYSTEM



FREE RESOURCES

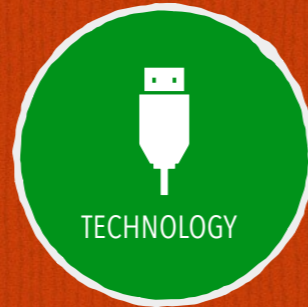


Students who pay their Student Benefits fee* of \$22.50 per semester have free access to the following transportation options:

- Big Blue Bus
- Metro
- Culver City Bus
- LADOT Dash
- Norwalk Transit
- Montebello Bus
- City of Commerce
- Bike Share

smc.edu/about/campuses/parking-transportation/

*Fee waivers are issued by Basic Needs Counselors following student assessment



Free Chrome Books
Student should inform instructor or counselor

smc.edu/admission-aid/promise-program/promise-chromebook-project.php

WiFi Access on All Campuses



The Bodega Rack is open during Bodega hours and offers free gently used clothing for students. Quantities vary.

ACCESS TO SHOWERS
SMC provides students who are homeless with access to showers located on the 2nd floor of Core Performance Center (CPC).

Fall Hours*
M-Th: 7-10 PM
Fri: 7 AM-6 PM
(*subject to change)



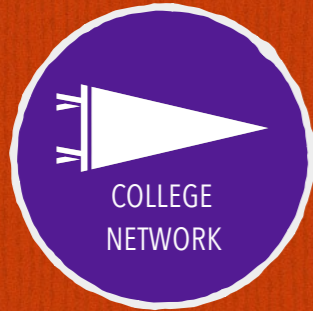
The Center for Wellness and Wellbeing provides a range of psychological services to help enhance the overall personal wellbeing of students. Appointments available in person and virtual.

Glasses-4-Classes
smc.edu/wellness

For more mental health services, visit:
smc.edu/wellness

For more health center info, visit:
smc.edu/healthcenter

MORE RESOURCES



DIRECT CONNECT
a student navigation portal
that centralizes essential
SMC information for
students
[smc.edu/student-support/
direct-connect/](http://smc.edu/student-support/direct-connect/)

**GATEWAY TO
PERSISTENCE & SUCCESS**
an online platform to support
student success and
retention
[smc.edu/student-support/
academic-support/
counseling/gps/](http://smc.edu/student-support/academic-support/counseling/gps/)



Students experiencing an
immediate need for shelter
can call 2-1-1 for local
availability.

Safe Place for Youth
Serves ages 18-24
310-902-2283

The People Concern
Serves ages 25+
323-334-9000

**Los Angeles
Room & Board's
Opportunity House**
Serves ages 18-27

St. Joseph Center
Serves ages 25+
310-396-6468



F/T SMC student parents may
be eligible to receive free
child care for infants,
toddlers, and preschool-age
children while attending
Santa Monica College.

Students must be in good
academic standing,
maintaining a 2.0 GPA +.
Students must be be Pell
Grant eligible based on FAFSA
application.

[smc.edu/student-support/
child-care/](http://smc.edu/student-support/child-care/)



Emergency support* is available
for qualified students with an
urgent need - one where a
financial situation will impede
the student's ability to continue
their upward trajectory, has the
potential to cause major
disruption, or where there are
no safety nets in place.

Examples include but are not
limited to:

- The absence of appliances
or beds
- Cars, auto repair (high
vetting)
- Emergency Home Repairs
- Relocation expenses
- Pending eviction

*Made possible by a partnership between
SMC Foundation and The Change Reaction



FOOD RESOURCES

Food Program?	What?	Located?	How to Access
SMC's Bodega	Fresh produce, meats, dairy, shelf stable items, personal hygiene items (toothpaste, soap, tampons, pads), gently used clothing, books	Across from the Health Office adjacent to the cafeteria	Current Student ID Required For Hours of Operation Visit smc.edu/basicneeds
Meal Project 2.0 Everytable	Free, fresh meals available for pick-up on campus at the Bodega. For food insecure students who are enrolled in at least 5 for credit units	foodsecurity@smc.edu	Secure website link issued to qualified students by basic needs counselors
Meal Project 2.0 Bento	Free, fresh to-go meals using bento app. For food insecure students who are enrolled in at least 5 for credit units	foodsecurity@smc.edu	Secure app issued to qualified students by basic needs counselors
CalFresh	California's Supplemental Nutrition Assistance Program (SNAP) aka food stamps that provides individuals and families with money to buy food and groceries	getcalfresh.org/?source=santa-monica-college	Amount varies depending on eligibility but can be as high as and distributed on an EBT card
Bodega Bites	Stocked, shelf-stable snacks	See Next Slide	Current Student ID Required



SAMPLE BODEGA ITEMS



INTRODUCING

Look for
these
stickers



Grab and go healthy snacks including granola bars, cereal bars, crackers, apple sauce and other light “bites” available for students. The Bodega Bites “sites” are all over campus, including satellite campuses.



(15) LOCATIONS

Campus?	Program Located?	Access?
Main Campus > SSC > 2nd Floor	Black Collegians & Latino Center	Based on department hours
Main Campus > Pavilion > 2nd Floor	Athletic's Mail Room Across from Athletic Director's Office	Based on department hours
Main Campus > Math Complex	Math Department Offices	Based on department hours
Main Campus > Drescher > 3rd Floor	DH 301 & DH 301A	Based on department hours
Main Campus > Business >- 1st Floor	Office of Fashion & Photography	Based on department hours
Main Campus > SSC > 2nd Floor	EOPS	Based on department hours
Main Campus > SSC > 1st Floor	Center for Students with Disabilities	Based on department hours
Main Campus > Science Bldg 2nd Floor	Life & Physical Sciences Faculty Office Lobby	Based on department hours
Main Campus > Cayton Center Basement	Veterans Success Center	Based on department hours
Main Campus > Cayton Center 2nd Floor	Office of Student Life	Based on department hours
Bundy Campus	TBD	Based on department hours
Center for Media & Design	CMD 240	Based on department hours
Performing Arts Campus > 2 nd Floor	Music Office Lobby	Based on department hours
Emeritus Campus	Lobby 140	Based on department hours

A large, stylized logo for 'buddle' is centered in the background. It features a green circular shape with a dark green outline, containing a brown circular shape with a dark brown outline. The word 'buddle' is written in a white, cursive font across the logo.

buddle

Visit: smc.edu/basicneeds